

**MMP25 Antibody (C-term)**  
**Purified Rabbit Polyclonal Antibody (Pab)**  
**Catalog # AP6206a**

**Specification**

---

**MMP25 Antibody (C-term) - Product Information**

Application	WB,E
Primary Accession	<a href="#">O9NPA2</a>
Other Accession	<a href="#">NP_071913</a>
Reactivity	Human, Mouse
Host	Rabbit
Clonality	Polyclonal
Isotype	Rabbit IgG
Calculated MW	62554
Antigen Region	470-499

**MMP25 Antibody (C-term) - Additional Information**

**Gene ID** 64386

**Other Names**

Matrix metalloproteinase-25, MMP-25, 3424-, Leukolysin, Membrane-type matrix metalloproteinase 6, MT-MMP 6, MTMMP6, Membrane-type-6 matrix metalloproteinase, MT6-MMP, MT6MMP, MMP25, MMP20, MMPL1, MT6MMP

**Target/Specificity**

This MMP25 antibody is generated from rabbits immunized with a KLH conjugated synthetic peptide between 470-499 amino acids from the C-terminal region of human MMP25.

**Dilution**

WB~~1:1000

E~~Use at an assay dependent concentration.

**Format**

Purified polyclonal antibody supplied in PBS with 0.09% (W/V) sodium azide. This antibody is prepared by Saturated Ammonium Sulfate (SAS) precipitation followed by dialysis against PBS.

**Storage**

Maintain refrigerated at 2-8°C for up to 2 weeks. For long term storage store at -20°C in small aliquots to prevent freeze-thaw cycles.

**Precautions**

MMP25 Antibody (C-term) is for research use only and not for use in diagnostic or therapeutic procedures.

**MMP25 Antibody (C-term) - Protein Information**

**Name** MMP25

**Synonyms** MMP20, MMPL1, MT6MMP

**Function** May activate progelatinase A.

**Cellular Location**

Cell membrane; Lipid-anchor, GPI-anchor; Extracellular side. Secreted, extracellular space, extracellular matrix

**Tissue Location**

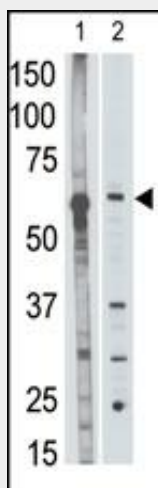
Expressed predominantly in leukocytes, lung and spleen. Expressed also in colon carcinoma, astrocytoma and glioblastomas

**MMP25 Antibody (C-term) - Protocols**

Provided below are standard protocols that you may find useful for product applications.

- [Western Blot](#)
- [Blocking Peptides](#)
- [Dot Blot](#)
- [Immunohistochemistry](#)
- [Immunofluorescence](#)
- [Immunoprecipitation](#)
- [Flow Cytometry](#)
- [Cell Culture](#)

**MMP25 Antibody (C-term) - Images**



The anti-MMP25 C-term Antibody (Cat.#AP6206a) is used in Western blot to detect MMP25 in mouse liver tissue lysate (lane 1) and HL60 cell lysate (lane 2) lysate.

**MMP25 Antibody (C-term) - Background**

Proteins of the matrix metalloproteinase (MMP) family are involved in the breakdown of extracellular matrix in normal physiological processes, such as embryonic development, reproduction, and tissue remodeling, as well as in disease processes, such as arthritis and metastasis. Most MMPs are secreted as inactive proproteins which are activated when cleaved by extracellular proteinases. However, MMP25 is a member of the membrane-type MMP (MT-MMP) subfamily; each member of this subfamily contains a potential transmembrane domain suggesting that these proteins are expressed at the cell surface rather than secreted. In addition, it is thought

that this protein is activated intracellularly by furin-like enzymes. This protein activates MMP2 by cleavage. The gene has previously been referred to as MMP20 but has been renamed matrix metalloproteinase 25 (MMP25).

#### **MMP25 Antibody (C-term) - References**

Matsuda, A., et al., J. Biol. Chem. 278(38):36350-36357 (2003).  
Velasco, G., et al., Cancer Res. 60(4):877-882 (2000).  
Nagase, H., et al., J. Biol. Chem. 274(31):21491-21494 (1999).  
Pei, D., Cell Res. 9(4):291-303 (1999).  
Kojima, S., et al., FEBS Lett. 480 (2-3), 142-146 (2000).